

Datsuzoku

for clarinet, harp, and string quartet

Osnat Netzer

2022

Commissioned by Kassia Ensemble

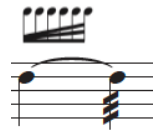
PERFORMANCE NOTES

General Notation

Arrow between descriptors: move as smoothly as possible from one state to another. Grace notes are to be played before the metric placement of the following note. The exception is when the grace note is tied to the previous note (mvt. 5). In such case, the grace note delays the arrival of the following note. Example:



Tremolo speed is indicated as slow, moderate, fast or irregular, with arrow between indications. If note starts as normal and tremolo pace increases, it is indicated with the following symbol above the staff:



Harp Notation

Sections marked “with tuning key” – pitches that appear on the staff are the resulting pitch, not the plucked string. Plucked string is a 3rd or 4th lower than written pitch.

“Normale” cancels out tuning key.

Movement 2 “Butterfly Garden” – maintain a steady dynamic of *mp* to *mf*.

Vibrato at tuning pin (mvt. 2) – pluck with the right hand, and with the left hand, press and release the string just below the tuning pin.

Muffled gliss. (mvt. 5) – palms against the string, muffle sound as you glissando, move in contrary motion.

Clarinet Notation

flz. flutter tongue



Normal tone.



Some air in sound.



Very airy – almost no pitch.

Glissando without specific goal tone (mvt. 2) – pitch bend in the indicated direction.

Diamond notehead (mvt. 4) – sing into the instrument. Written pitch is transposed to B ♭

Strings Notation

MSP molto sul ponticello

MST molto sul tasto

Natural harmonics are notated with diamond notehead, pertaining to the desired node.

Most artificial harmonics in the piece are touch-four, three or five. The exception is the stopped octave harmonic in mvt. 3. This requires an extended hand position, and a large stretch between the first and fourth fingers. If this cannot be managed, the player is encouraged to play the upper note and imitate the timbre of a harmonic, by altering bow position.

Datsuzoku

for Kassia Ensemble
1. Rock Garden

Osnat Netzer

with intention ♩ = 60

with tuning key

mf

D# C# B E F# G A

pizz.

arco

pp

p

normale

mf

pizz.

mf

pp

p

mf

pp

p

mf

mf

6

with tuning key

p

normale

pedal gliss.

mf

6

Vln. I

p

arco

p

B - B \flat A#

Vln. II

mf

slow and stly

pizz.

p

p

mf

mf

mp

mf

Vla.

p

mf

mp

mf

Vc.

mf

mf

Datsuzoku

12

B♭ Cl. *p*

Hp. *p* *mf* *mf* with tuning key

Vln. I *mf* *sfz*

Vln. II *mf* *sfz*

Vla. *p* *mf* *sfz*

Vc. *p* *mf* *sfz* *mf* *f*

B♭ pizz. D♭ G#

18

B♭ Cl. *p* *mf*

Hp. normale fast *f* *mp* *mf* with tuning key normale

Vln. I *p* *mp* arco pizz. A♭ G♭ B♭

Vln. II *mf* *mp* arco sul pont. irregular

Vla. *mp* *pp*

Vc. *mf* *mf*